

External Exposure to Fire Classification Report

Product group Steni Nature

Steni a.s.
Lågendalsveien 2633
N-3277 Steinsholt
Norway

File: PCA10129
Serial No.: 14493
Ref.: MPA/LIA
Pages: 4
Encl.: 2

Date: 2014-05-27



1 SPONSOR

Steni a.s.
Lågendalsveien 2633
N-3277 Steinsholt
Norway

2 INTRODUCTION

This classification report defines the classification assigned to the product group of roof covering system "Steni Nature" in accordance with the procedures given in EN 13501-5:2005+A1:2009.

3 DETAILS OF ROOF COVERING SYSTEM

3.1 NATURE AND END USE APPLICATION

The product group of roof covering system "Steni Nature" is defined as stone based tiles mounted as shown in enclosure 1. The Steni products included in this product group is listed in enclosure 2.

3.2 DESCRIPTION

The roof covering system "Steni Nature" is fully described in the test report in support of the classification listed in 4.1.

4 REPORTS AND RESULTS IN SUPPORT OF THIS CLASSIFICATION

4.1 REPORTS

Name of laboratory	Name of sponsor	Report ref. No	Test method	Date
DBI	Steni a.s.	PFA10539	ENV 1187 Test 2	2014-04-02/03

4.2 TEST RESULTS

Test conditions: nailed and screwed

Test pitch: 30°

Substrate: Non-standard substrate of oriented strand board (OSB) with a measured density of 630 kg/m³.

Parameter	Criteria		Test results ^a					Compliance Y/N
	Mean	Max	Spe.1	Spe.2	Spe.3	Mean	Max	
Damaged length at 2 m/s – roof covering	≤ 0,550 m	≤ 0,800 m	50	50	50	50	50	Y
Damaged length at 2 m/s – substrate	≤ 0,550 m	≤ 0,800 m	0	0	0	0	0	Y
Damaged length at 4 m/s – roof covering	≤ 0,550 m	≤ 0,800 m	50	50	50	50	50	Y
Damaged length at 4 m/s – substrate	≤ 0,550 m	≤ 0,800 m	0	0	0	0	0	Y
^a Not for extended application. Results in mm								

5 CLASSIFICATION AND FIELD OF APPLICATION

5.1 REFERENCE

This classification has been carried out in accordance with EN 13501-5:2005+A1:2009.

5.2 CLASSIFICATION

The roof covering system of the product group "Steni Nature" in relation to its external fire performance is classified: **B_{ROOF}(t2)**.

5.3 FIELD OF APPLICATION

This classification is valid for the following conditions:

- Substrate of oriented strand board (OSB) with density equal to or greater than 473 kg/m³
- with the prescribed PROTEGO G2 mounting

6 LIMITATIONS

This report does not represent type approval or certification of the product.



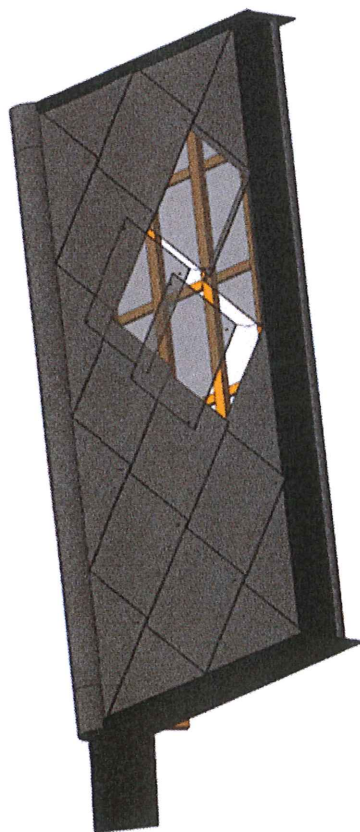
Lina Ivar Andersen
B.Sc.Chem.Eng.Hon.

/

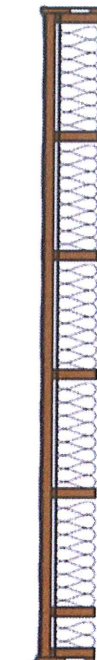
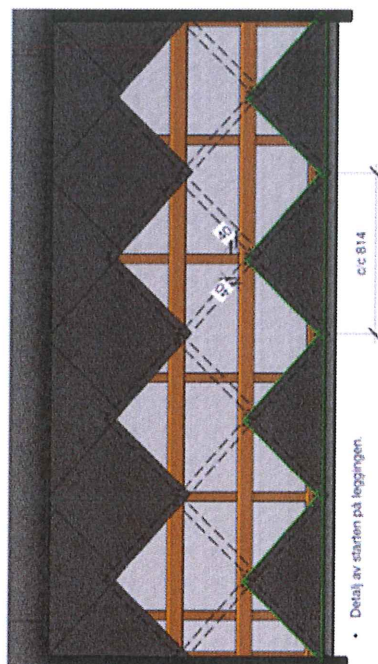
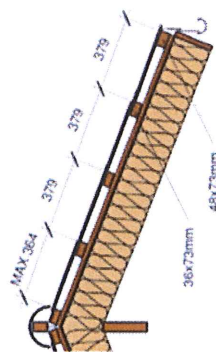



Martin Pauner
M.Sc.Civ.Eng

Steni a.s.
Lågendalsveien 2633
N-3277 Steinsholt
Norway



- Nedre platerad monteres kant i kant med nedre lekke
- Nedre lekke dim. 48x73mm, øvrige 36x73
- Monteres med undertak som for takstein
- Platte monteres med 40mm overlapp mot plattene i raden nederfor



REV	DATE	BESKRIVELSE
1	20	12-02-2014
<p>W:\11-10-14\PROTEGO-G2\Protego G2.doc Siste Modifikasjon: 1 20 12-02-2014 Utarbeidet av: JLNK</p>		
<p>PROTEGO G2 Protego Montering</p>		
		<p>Steni as Tlf: +47 33156600 www.steni.com</p>

steni® nature



TEKNISK DATABLAD

STENI NATURE	Type FM	Type F	Type M	Type G	Type T
Stein størrelse	08-1,8 mm	1-3 mm	3-5 mm	5-8 mm	8-12 mm
Vekt (toleranser ± 10 %)	11 kg/m ²	12 kg/m ²	15 kg/m ²	18 kg/m ²	25 kg/m ²
Tykkelse	ca. 5,5 mm	6,0 mm	8,0 mm	14 mm	18 mm

MATERIALDATA-DIMENSJONER	VERDI	ENHET	TESTMETODE
Tykkelse (Se tabell over)	5,5 - 18	mm	Steni standard
Vekt (Se tabell over)	11 - 25	kg/m ²	«
Densitet	ca. 2000	Kg/m ³	«
Standard bredde (ved 23° C)	295,395,595,1195	mm	«
Standard lengde (ved 23° C)	800 - 3495	mm	«
Toleranser - lengde / bredde	± 2	mm	«
Kant retthet helformat	± 1	mm	«
Rettvinklethet (diagonalavvik)	3	mm	«
Hullavstand boring, diam. 4,5 mm	± 5	mm	«
OVERFLATE:			
Stein typer div.	Se fargekart		Steni standard
Bakside	Slett		«
FYSISKE DATA:			
Bøyefasthet	≥ 40	N/mm ²	CSTB metode
E-modul	≥ 10000	N/ mm ²	CSTB metode
Motstand mot harde støt, max fallhøyde for kule	3,5	M	NT Build 066
Dimensjonerende: Skruer uttrekk i trevirke C18	341	N/ skruer	NS-EN 1382
FUKT OG VARME:			
Temperatur utvidelse (-20 °C til + 65 °C)	0,021- 0,026	mm/m K	NBI
Dimmensionsstabilitet Kumulativ endring maks	0,04%	%	NS EN 438-2-2005 Part 18
Vannabsorpsjon	< 1,5	%	ISO/R 62-178
Vandampmotstand	300 · 10 ⁻²	(m ² sPa)/Kg	ASTM E 96-66
Vandampgjennomgang	3,3 · 10 ⁻¹⁴	Kg/(m ² sPa)	ASTM E 96-66
FROST BESTANDIGHET:			
Ingen skade	300	SYKLUS	NBI
BRANNTEKNISKE DATA:			
Euro Class	B-s1,d0 *		EN 13501-1

Steni AS arbeider kontinuerlig med produktutvikling og forbeholder seg retten til å endre sine spesifikasjoner uten forvarsel. Tekniske data er en nøytral beskrivelse av produktets ytelse. Det er ikke Stenis ansvar å vurdere produktets ytelse i forhold til den tiltenkte bruken og de til enhver tid gjeldende regler og forskrifter.

* Brannklassen forutsetter montering i henhold til monteringsanvisning. Andre løsninger må vurderes spesielt.

Sjekk alltid våre hjemmesider www.steni.no og www.steni.com for siste gjeldende versjoner av markedsmateriell, montasjeanvisninger og teknisk dokumentasjon.

Steni-0301-NO-1401



Building knowledge